



### **A901-LA-MIC-XX**

901 Series Local Annunciator with Microphone and two Switch/LED annunciator modules. Mounts to A901-CHASSIS-CP in the middle slot to provide a microphone for paging and any combination of switch, LED, or switch-LED modules. Shown with one A12L LED module and one A8S Switch module (i.e. A901-LA-MIC-LS)



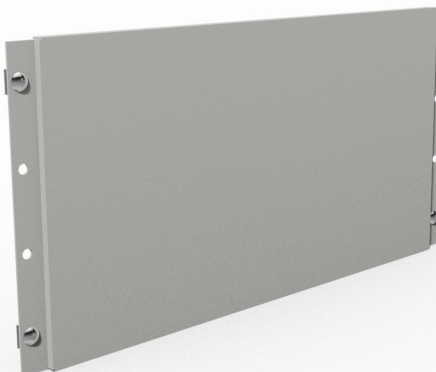
### **A901-LA-MIC-BB**

901 Series Local Annunciator with Microphone only. Mounts to A901-CHASSIS-CP in the middle slot to provide a microphone when used for single zone "page all" installations or when switches are in second cabinet.



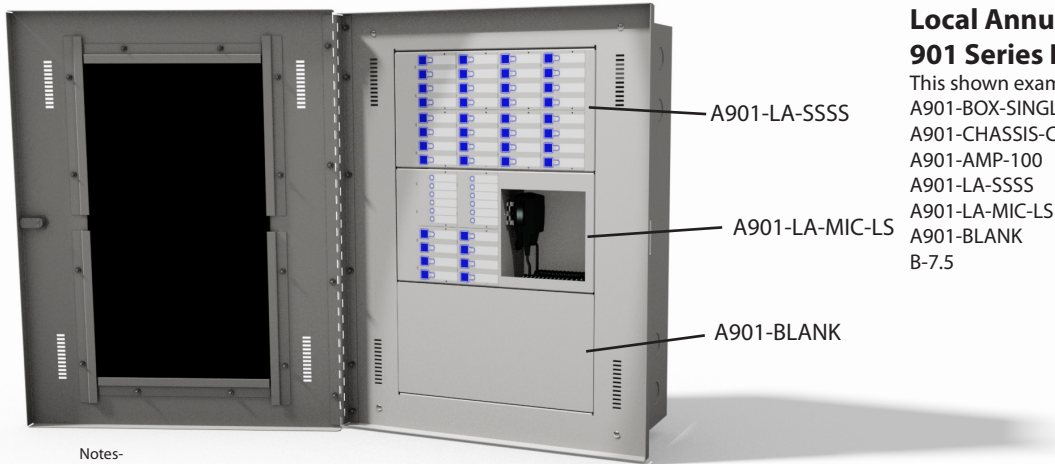
### **A901-LA-XXXX**

901 Series Local Annunciator with up to (4) Switch/LED annunciator modules. Mounts to A901-CHASSIS-CP in any of the three slots to provide LED annunciation and manual switch control any combination of switch, LED, or switch-LED modules. Shown with four A8S modules (i.e. A901-LA-SSSS)



### **A901-BLANK**

901 Series Local Annunciator blank plate. Mounts to A901-CHASSIS-CP when switch/LED annunciators are not required.

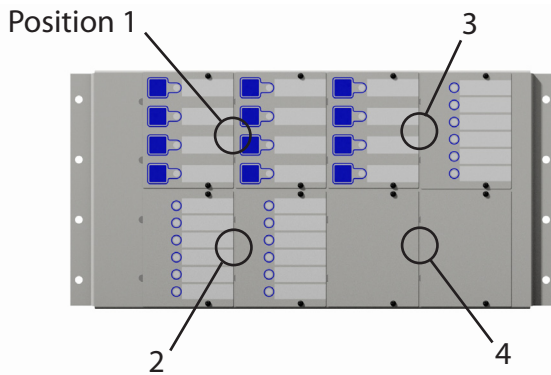


## Local Annunciators Shown in 901 Series Flush Cabinet

This shown example would include:  
 A901-BOX-SINGLE-F-W  
 A901-CHASSIS-CP  
 A901-AMP-100  
 A901-LA-SSSS  
 A901-LA-MIC-LS  
 A901-BLANK  
 B-7.5

Notes-  
 A901-LA-MIC-XX mount in middle position on A901-FACPs.  
 A901-LA-XXXX Can not mount in front of A901-CTRL assemblies.

## Ordering Information



Order Number:

**A901-LA-<position 1><2><3><4>**

Where <position #> can be:

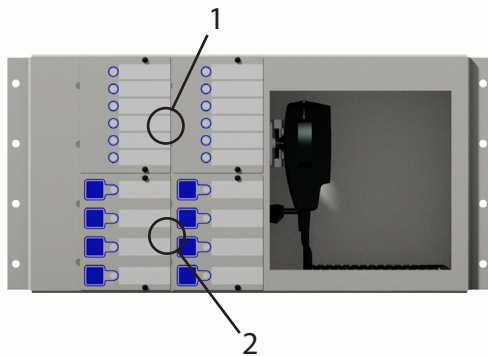
S: D900-A8S (8 Switches with Tri-color LEDs)

C: D900-A4S6L (4 Switches with Tri\_color LEDs and 6 Tri-color LEDs)

L: D900-A12L (12 Tri-color LEDs)

B: D900-LA-BLANK

(i.e. A901-LA-SLCB shown)



Order Number:

**A901-MIC-LA-<position 1><2>**

Where <position #> can be:

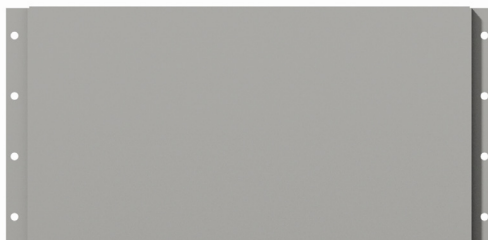
S: D900-A8S (8 Switches with Tri-color LEDs)

C: D900-A4S6L (4 Switches with Tri\_color LEDs and 6 Tri-color LEDs)

L: D900-A12L (12 Tri-color LEDs)

B: D900-LA-BLANK

(i.e. A901-LA-MIC-LS shown)



Order Number:

**A901-BLANK**

UL Listed